

Comprehensive Behavioral Health Model CBHM: Fall 2022 Update

Prepared for the SPC October 20 2022

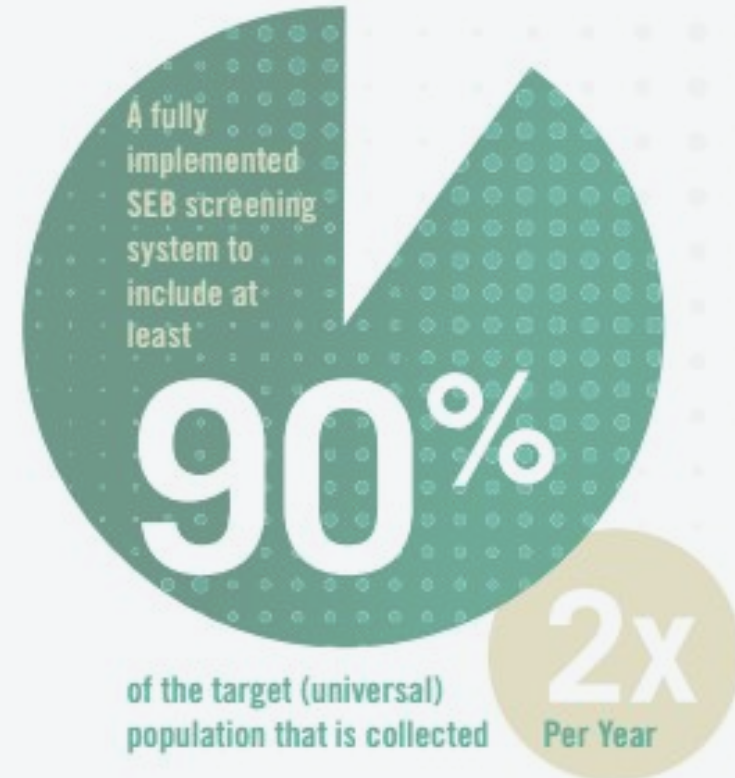
Brought to you by your School Psychology Team:

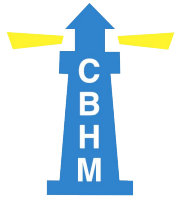
Ms. Alvarado - Ohrenberger

Dr. Sheera - Ohrenberger

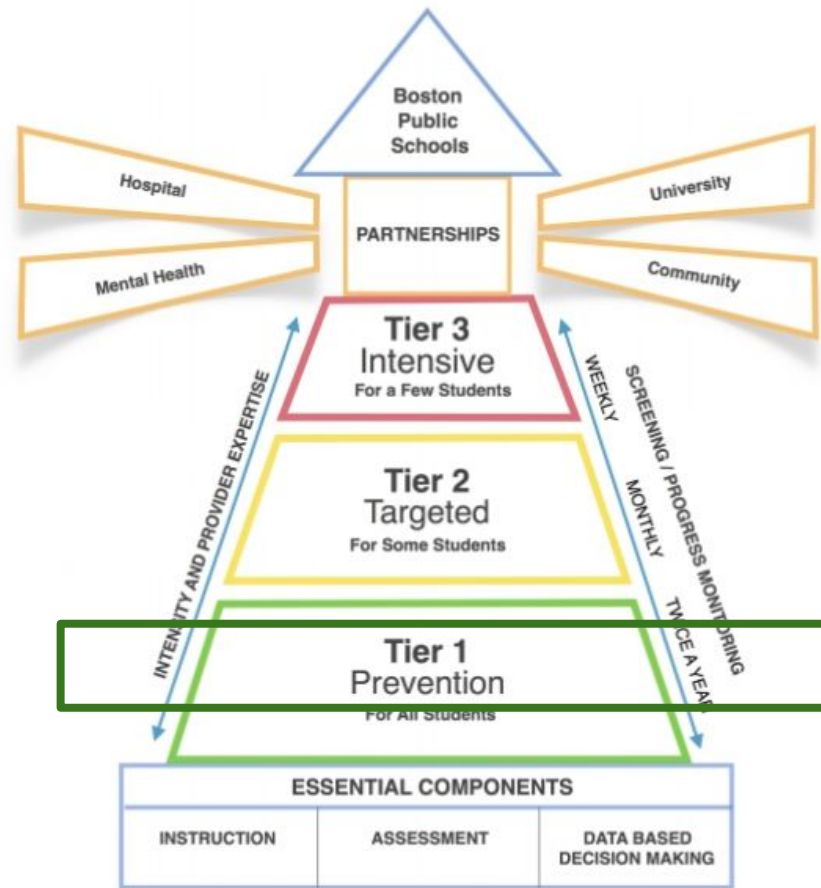
O'Sheho Toweh Pre-Doctoral Intern

Lilly Day Doctoral Practicum Student





Learn more about CBHM here:
<https://cbhmboston.com/>



Boston Public Schools Comprehensive Behavioral Health Model

Ohrenberger Team

Ms. Alyssa Alvarado
Dr. Sheera Hefter
School Psychologists

Ms. Kelly Welch
Social Worker

**Behavioral
Health
Team**

Ms. Melissa Quinones
Ms. Christine Cavanaugh
Johnston
Ms. Rebecca Vallentine
Clinical Coordinators

Ms. Alex Mack
Ms. Rachel Holly
Home for Little
Wanderers

**Student
Success
Team
(SST)**

**Cross
Campus
Collaboration**

**School
Climate:**
OWLS
Fun Fridays
Grade Level
Assemblies

**Behavioral
Health
Team**

**Our Goal!
Students
experience
school as a
positive place
that values
them**

**Direct
Instruction:**
Second Step
Zones of
Regulation

**Range of
Services:**
1:1/Groups
Short-term/
Community
Referrals

**Monthly
Themed
Grade Level
Meetings**

Data:
Attendance
BIMAS
Feedback
Forms

Full Implementation is a 3-5 year process



Services provided to students identified as needing additional support beyond Tier 1

- Small short term groups
- Check-in/Check-out



3 Services provided for individual students identified as needing additional support

- Individual counseling (short or longer term)
- Community referrals

1 Community building activities and direct skill instruction for all students in the classroom

- Restorative Justice circles
- Second Step
- Zones of Regulation

What is Universal Screening?



UNIVERSAL SCREENING

for MTSS

The purpose of universal screening is to detect small problems before they become **BIG** problems

vision



reading



behavior



HOW?

Universal screening in **ACADEMIC** content areas involves students completing various academic tasks

Universal screening for **BEHAVIOR** involves teachers completing rating scales designed to measure how frequently students demonstrate certain behaviors at school

In **BOTH** cases, universal screeners should be:



What kinds of questions are included?

Questions about school

- *Followed directions*
- *Was prepared for class*

Questions about behavior

- *Shared what they were thinking about*
- *Fought with others*

Questions about friendships

- *Was generally friendly with others*
- *Worked out problems with others*

Questions about coping with emotions

- *Appeared distressed*
- *Appeared angry*

Screening Process

Parent
Notification

Teacher Training
& Preparation

Teams meet to
clarify strengths
and needs

School-wide
screening: Spring

Mid /Late Fall

Ongoing

Early
Fall

School-wide
screening:
Fall

Late
Fall

Tiering of
interventions

Spring

Progress Monitoring



Frequently Asked Questions

- 1) Is the BIMAS - psychological testing? No! It is designed to be completed by classroom teachers. As a screener, it is asking for the input from those who know the students best and interact with them the most at school.
- 2) When will the screening take place? For the Fall in November and then again in the late Spring.
- 3) Will parents have access to the results? Caregivers can request the results for their child/children, and can go more into detail if they would like to with the school psychologists.
- 4) What about parental input? We would love to incorporate direct caregiver ratings in the future as look to do as we scale up the use of the measure. As always, classroom teachers, and our team of school psychologists and social workers are here to support and check-in if you have any questions or concerns about your child.
- 5) Is there a way to rule out teacher bias? As a school community we are actively invested in anti-racist work, we are committed to minimizing bias and considering the whole child across settings. This rating is only one in a wide array of information considered when thinking about how to support each student and their needs.
- 6) What will happen with the data? The BIMAS data, in addition to other data sources, will be considered when making determinations around both universal approaches to the social and emotional wellbeing of our students and Tier-2 (small group) supports.

More Questions?



Please reach out!

Ms. Alvarado- aarpino@bostonpublicschools.org

Dr. Sheera shefter@bostonpublicschools.org

We will also be back to talk more!